

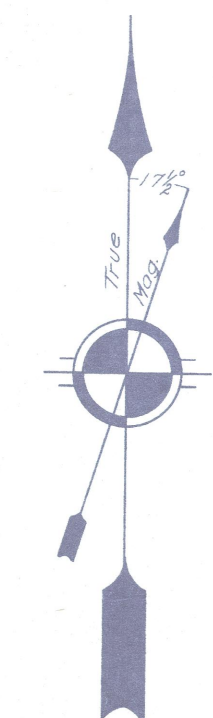
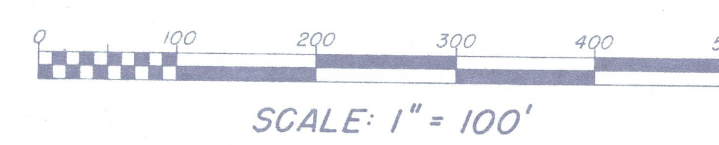
# HOUSING

**ALL GOOD**    **LESS THAN FAIR**  
**FAIR**        **DILAPIDATED**

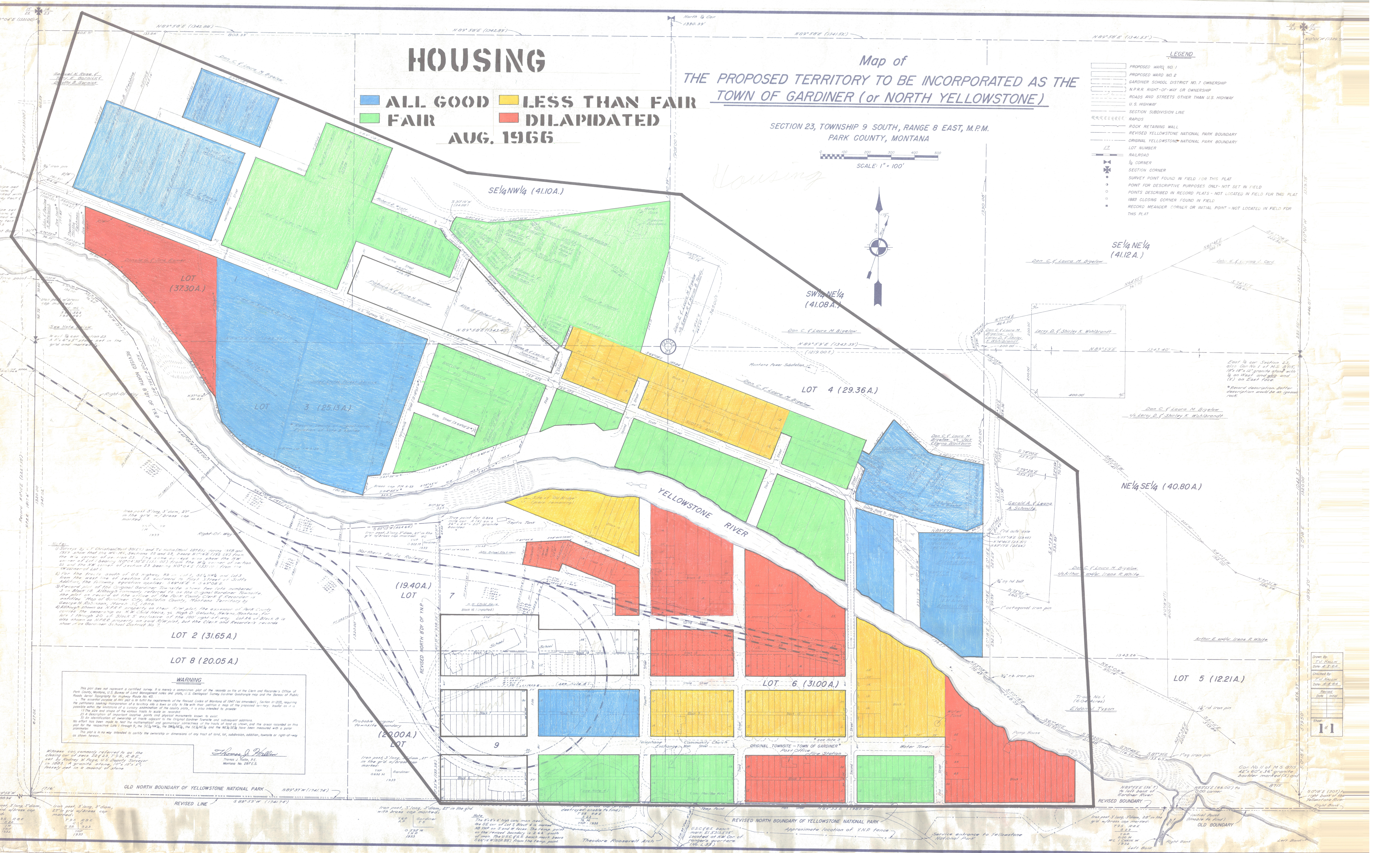
**AUG. 1966**

## Map of THE PROPOSED TERRITORY TO BE INCORPORATED AS THE TOWN OF GARDINER (or NORTH YELLOWSTONE)

SECTION 23, TOWNSHIP 9 SOUTH, RANGE 8 EAST, M.P.M.  
PARK COUNTY, MONTANA



- ### LEGEND
- PROPOSED WARD NO. 1
  - PROPOSED WARD NO. 2
  - GARDINER SCHOOL DISTRICT NO. 7 OWNERSHIP
  - N.P.R.R. RIGHT-OF-WAY OR OWNERSHIP
  - ROADS AND STREETS OTHER THAN U.S. HIGHWAY
  - U.S. HIGHWAY
  - SECTION SUBDIVISION LINE
  - RAPID
  - ROCK RETAINING WALL
  - REVISED YELLOWSTONE NATIONAL PARK BOUNDARY
  - ORIGINAL YELLOWSTONE NATIONAL PARK BOUNDARY
  - LOT NUMBER
  - RAILROAD
  - 1/4 CORNER
  - SECTION CORNER
  - SURVEY POINT FOUND IN FIELD FOR THIS PLAT
  - POINT FOR DESCRIPTIVE PURPOSES ONLY - NOT SET IN FIELD
  - POINTS DESCRIBED IN RECORD PLATS - NOT LOCATED IN FIELD FOR THIS PLAT
  - 1883 CLOSING CORNER FOUND IN FIELD
  - RECORD MEANDER CORNER OR INITIAL POINT - NOT LOCATED IN FIELD FOR THIS PLAT



1) Surveys by J. Christian (Map 301E) and T. Hahn (Map 301E), June 1928 and 1929 show that the W. 1/4, Sections 22 and 23, T9S, R8E (192.22) from the W. 1/4 corner of Lot 23 to the N. 1/4 corner of Lot 23 show the 1/4 corner of Lot 23 bearing N04°30'E (131.30) from the W. 1/4 corner of Lot 23 and the 1/4 corner of Section 23 bearing N04°42'E (133.10) from the W. 1/4 corner of Lot 1.

2) The 1/4 corner of U.S. Highway 89 is 1/4 mi. S 1/4 NW 1/4 and 1/4 S 1/4 SW 1/4 from the west line of Section 23 according to Plat 3, 1928 of Section 23.

3) The original boundary between the 1/4 and 1/4 sections is shown in the plat. Although the plat is referred to as the original boundary, the plat is a revised plat of the Plat 3, 1928 of Section 23.

4) Although shown as 1/4 and 1/4 sections, the plat is the revision of the plat which covered the section as 1/4 and 1/4 sections, as High D. Colvins, M.P.M., Montana for lots 1 through 23 and Block 3, subdivision of the 100' right-of-way of Block 3 is also shown as 1/4 and 1/4 sections, as well as the 1/4 and 1/4 sections of the 100' right-of-way of Block 3.

### WARNING

This plat does not represent a certified survey. It is merely a comparison plot of the records on file at the Clerk and Recorder's Office of Park County, Montana, U.S. Bureau of Land Management notes and plats, U.S. Geological Survey Gardner Quadrangle map and the Bureau of Public Roads Aerial Photography for Highway Route No. 43.

The plat is a comparison plot of the records on file at the Clerk and Recorder's Office of Park County, Montana, U.S. Bureau of Land Management notes and plats, U.S. Geological Survey Gardner Quadrangle map and the Bureau of Public Roads Aerial Photography for Highway Route No. 43.

1) The plat is a comparison plot of the records on file at the Clerk and Recorder's Office of Park County, Montana, U.S. Bureau of Land Management notes and plats, U.S. Geological Survey Gardner Quadrangle map and the Bureau of Public Roads Aerial Photography for Highway Route No. 43.

2) An identification of ownership of tracts adjacent to the plat is shown in the plat. The plat is a comparison plot of the records on file at the Clerk and Recorder's Office of Park County, Montana, U.S. Bureau of Land Management notes and plats, U.S. Geological Survey Gardner Quadrangle map and the Bureau of Public Roads Aerial Photography for Highway Route No. 43.

3) An identification of ownership of tracts adjacent to the plat is shown in the plat. The plat is a comparison plot of the records on file at the Clerk and Recorder's Office of Park County, Montana, U.S. Bureau of Land Management notes and plats, U.S. Geological Survey Gardner Quadrangle map and the Bureau of Public Roads Aerial Photography for Highway Route No. 43.

Thomas D. Walker  
Montana No. 287E.S.

Drawn by  
Checked by  
Date of issue  
Date of issue  
Date of issue  
Date of issue

Sheet  
1 of 1